

**Engineering progress  
Enhancing lives**

## **More than a profile**

Power & data tracks  
Lighting & light profiles  
[www.rehau.com](http://www.rehau.com)



REHAU has been a leading developer of polymer-based solutions for the construction, window, automotive, furniture and industrial development sectors for over 70 years. Our partners benefit from this expertise at every level.



**silnova**  
SYNERGIZING SILICONE

Whether it's hydraulic systems for e-bikes, the airline industry, transport technology, refrigeration and shop systems or lighting and home solutions: the Industrial Solutions Division has the right solution for every sector and every application.







**Reliable.  
Innovative.  
Collaborative.**



Profile and sealing systems for commercial refrigeration



**Efficient developments**

Tailor-made profile technology, including in combination with aluminium/plastic

**Everything from a single source**

Electric-powered shelving, software, hardware and support profiles



**Reliable.  
Innovative.  
Collaborative.**



Third rail power track systems

Profile and sealing systems for the airline industry



#### **Material expertise**

Supporting elements including aluminium-steel composite power tracks



#### **Formula development**

- Tested and approved material formulas
- Innovative lightweight construction concepts



#### **System provider**

Integrated connection technology/ fittings



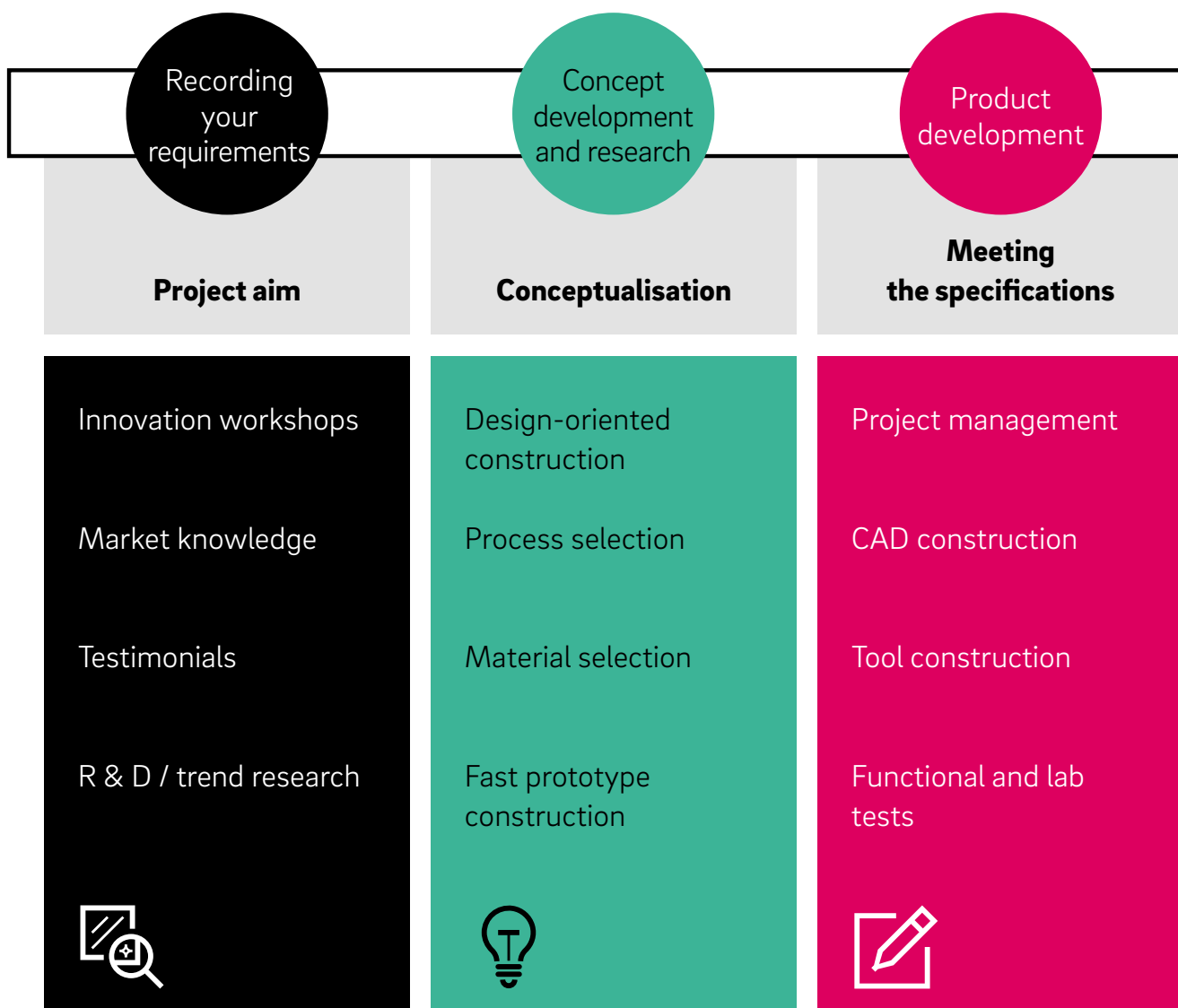
Hydraulic hoses for bicycle disc brakes

# We know how!

## Our areas of expertise

Customer-specific developments are our strength. As a reliable partner, we will accompany you from the idea to the product. Do you have special requirements? No problem! We develop the right profile solution.

### From the brief to series production







Exterior and interior profiles for cars/commercial vehicles



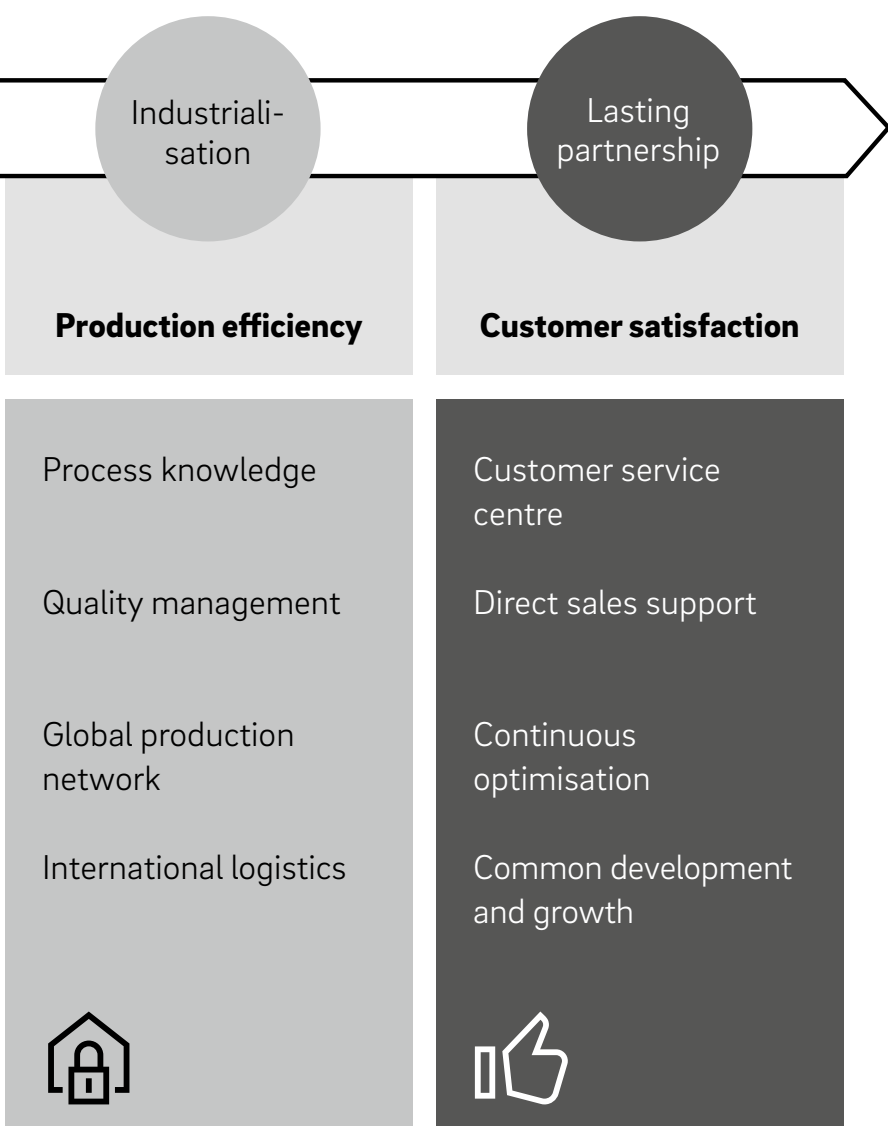
### Industry focus

From semi-finished products to complete preassembled systems.



### Flexibility

Standard product range immediately available from stock.



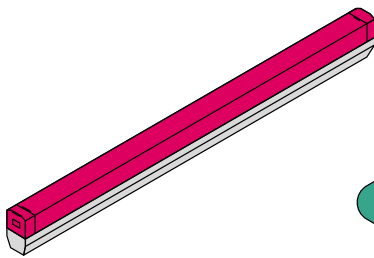
Profiles for the door/gate industry



Shower partition profile

# More than a profile

From linear lighting to complete power track systems: the profile solutions in this segment are multifunctional.



## Lighting and lights

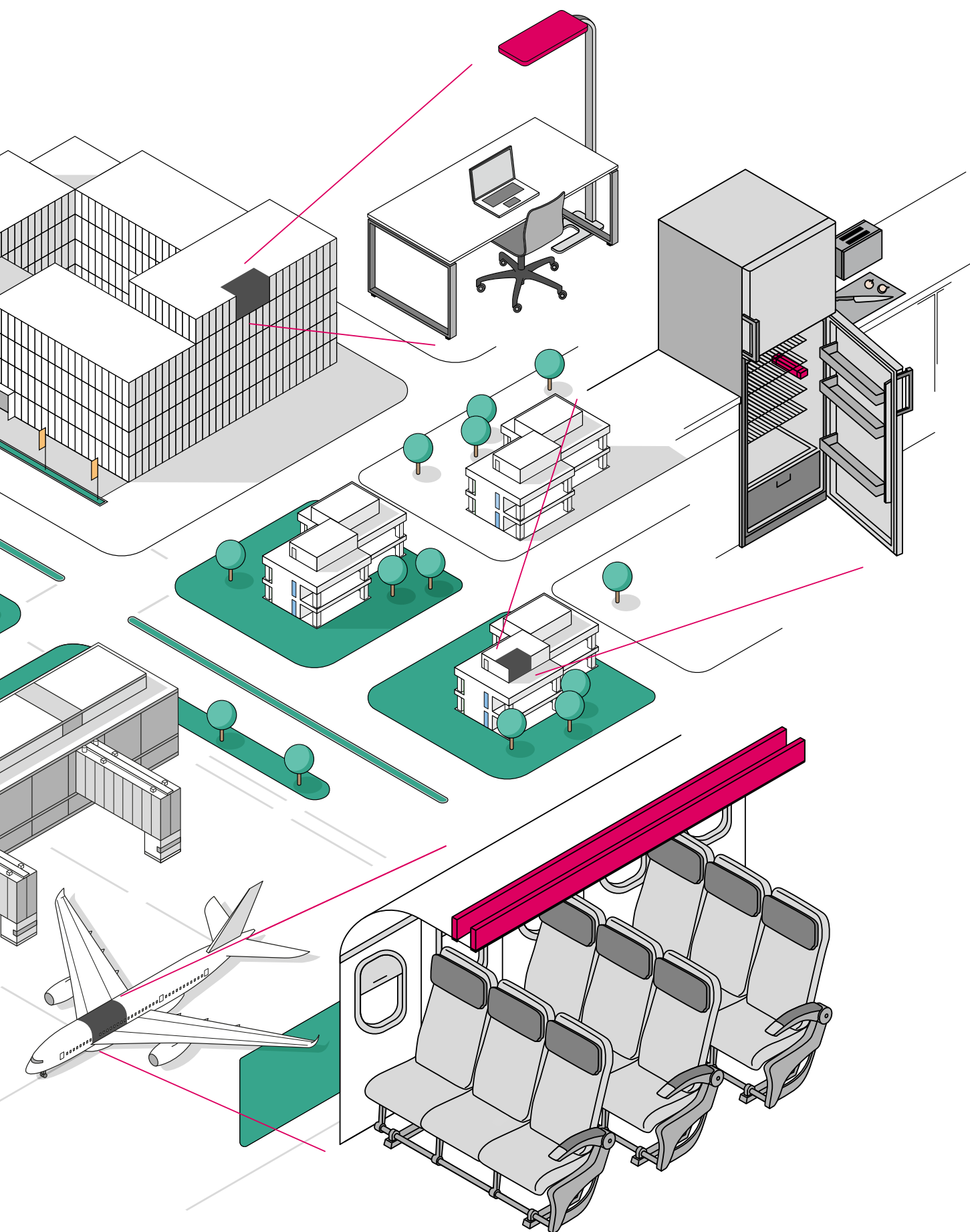
- Light covers
- Profiles for integrating LED strips
- Moulded parts (e.g. office lights)
- Body profiles/empty modules for linear lighting systems
- Assembly of complete lights



## Power and data supply

- Power and data tracks
- Power track systems (insulation profile including copper and coated aluminium profile)
- Cover profiles as protection against accidental contact
- Conductor rails





# Profile solutions for power and data tracks

We supply a large number of leading, global industrial firms from various sectors in the electrical industry.

## Our expertise

Our power and data supply solutions are based on a variety of customer requirements – from material selection, in line with regulations, through to item-specific fabrication methods. We provide individually developed complete solutions from a single source.

## Profiles for power tracks

- Plastic profiles with various types of data and power lines
- Insulation profiles for multi-phase power tracks, e.g. 230 V
- Insulation profiles for 3-phase power tracks
- Insulation profiles for 48 V power tracks, for example
- Insulation profiles for strip lighting systems
- Round, square or misshapen copper lines
- Special shapes

## Special profiles/mouldings

- Complete power tracks
- Cover profiles
- Connecting elements

## Insulation profiles

REHAU is a recognised industry specialist in the manufacture of power-supplying products. Our areas of expertise lie primarily in the development and production of customer-specific components through to complete systems. We use the experience from developments that have already been implemented and integrate our solutions into existing systems where necessary.







We process the complete spectrum of materials and colours in the areas of thermoplastics and elastomers. Depending on the specification, this is included in REHAU's sector know-how.

## Our service portfolio

- Development of single components through to complete systems including accessories
- Power track systems with or without support profiles
- Technically designed for various voltages in line with customer requirements
- Production with or without copper lines (possible copper shapes: round, rectangular or special shapes, coated and uncoated)
- Can be designed with a large number of conducting paths
- Right through to the development of new materials for specific applications



Network of internal laboratories, chemists, engineers and R&D



## Backbone



- Easy device and data transfer via Plug & Play
- Free choice of access points with no tangled cables
- The star-shaped or parallel routing of cables is no longer required
- Easy to design and utilise
- One track system for all applications (LAN, power, displays, projectors)





# Profile solutions for the lighting industry

Finding the right profile for the task at hand – that has been the main objective of our light and luminaire profile segment for years. In collaboration with our customers, we develop specification-based solutions.

## LED housing profiles/covers

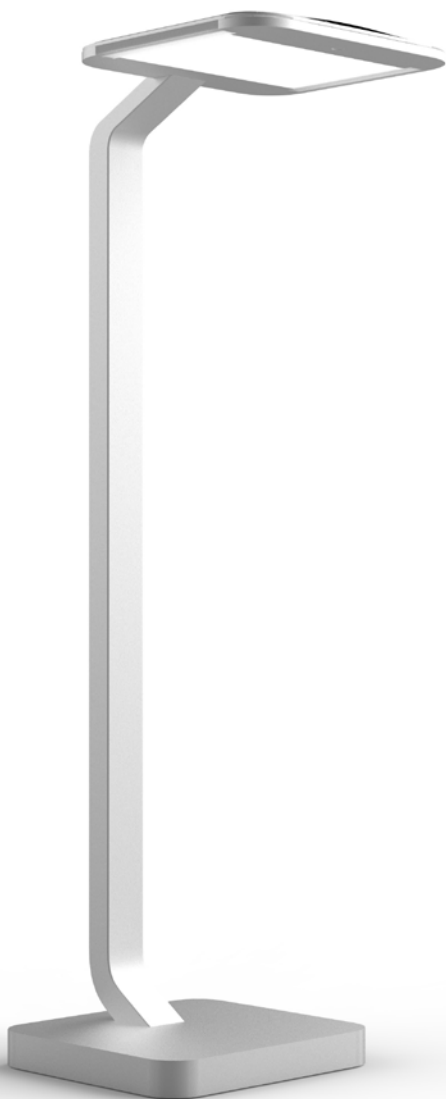
among others, for fridge lights



- Food-compliant material production
- Colours:
  - Transparent
  - Translucent (can be adjusted to suit each specific item)
  - Solid colour
- Multi-component profiles available
- Wide range of formulas: PVC, PC and PMMA



# Profile solutions for the lighting industry



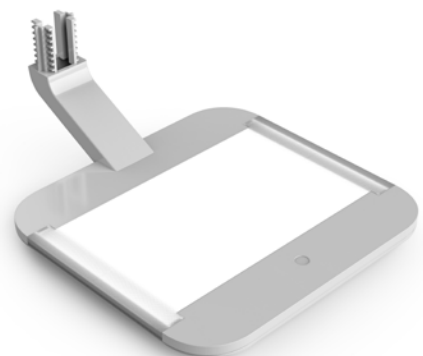
## Moulded parts (end caps, covers)

For lights



Joint development of customer-specific moulded parts, such as:

- End caps
- Covers
- Corner connections

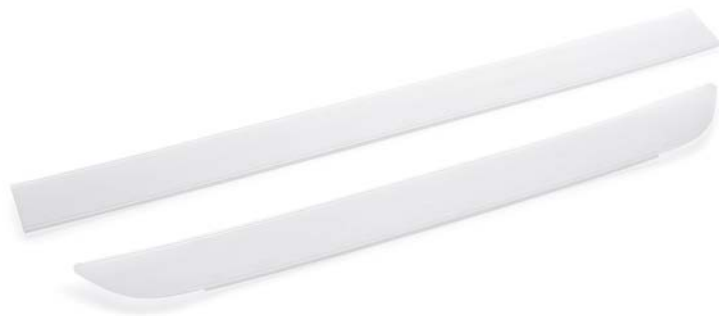






## Lighting covers

for aircraft interiors



- Materials and components meet the FST requirements for aircraft cabins
- AIRBUS-qualified: manufacturing process for extrusion (AIPS03-02-034) and assembly (AIPS03-07-002)
- Light distribution in the cabin can be adjusted based on material colour and profile chamber shape
- Modern, clear and smooth surfaces
- Surface finishes from satin to transparent
- Robust tooling design
- Functional integration can be represented in the profile via multi-component extrusion
- Lots of versions, small quantities possible
- Assembly (e.g. painting, machining)



# Things you might not know about REHAU



We supply the construction, furniture and automotive industries with over

**40,000** products.

We develop around

**1,000** new edgeband designs for the furniture industry every year.



REHAU's commercial refrigeration solutions help save up to

**50%** of energy used.





One in every **three cars** in Europe is fitted with a REHAU component.



**400,000 kilometres of** REHAU micro cable ducts are laid around the globe, connecting people all over the world.



With **100 patents** a year, REHAU embodies technical progress.

This document is protected by copyright. All rights based on this are reserved. No part of this publication may be translated, reproduced or transmitted in any form or by any similar means, electronic or mechanical, photocopying, recording or otherwise, or stored in a data retrieval system.

Our verbal and written advice with regard to usage is based on years of experience and standardised assumptions and is provided to the best of our knowledge. The intended use of REHAU products is described comprehensively in the technical product information. The latest version can be viewed at [www.rehau.com/TI](http://www.rehau.com/TI). We have no control over the application,

use or processing of the products. Responsibility for these activities therefore remains entirely with the respective user/processor. Where claims for liability nonetheless arise, they shall be governed exclusively according to our terms and conditions, available at [www.rehau.com/conditions](http://www.rehau.com/conditions), insofar as nothing else has been agreed upon with REHAU in writing. This shall also apply for all warranty claims, with the warranty applying to the consistent quality of our products in accordance with our specifications. Subject to technical changes.

[www.rehau.com/locations](http://www.rehau.com/locations)

© REHAU Industries SE & Co. KG  
Rheniumhaus, Helmut-Wagner-Straße 1  
95111 Rehau

E40700 EN 10.2023